

Icons

Throughout this section there are various icons to help you with your product selection.

∅ Diameter



Scan for more information

Steel



Index

Adjustable Plastic Feet.....	17	Plates & Sheets.....	15
Aluminium Tread Plate.....	397	Powder Coated Galvanised Steel Tube.....	15
Aluminium Tube.....	426	Punched Bars.....	32-33
Angles.....	11	Punched Sections.....	32-33
Bright Round Bars.....	13	Rectangular Cold Formed Hollow Sections (RHS)..	14
C Sections.....	10	Rectangular Plastic Tube Inserts.....	17
Circular Hollow Sections (CHS).....	14	Red Oxide Paint.....	207
Convex Bars.....	22	Red Oxide Universal Columns & Beams.....	10
CR4 Sheets (Cold Rolled).....	15	Reinforcing Bar (Rebar).....	11
Decorative Bars.....	21-22	Rolled Hollow Steel Caps (RHS).....	76-77
Durbar.....	396-397	Rolled Steel Angles.....	11
Floor Plates.....	396	Rolled Steel Channels.....	10
Landing Plates.....	397	Round Bars.....	13
Stair Treads.....	396	Round Hollow Sections (CHS).....	14
Edging Sections.....	355-357	Round Stainless Steel Bars & Tube.....	538
Equal Angles.....	11	Round Tube (CHS).....	14
ERW Tube.....	13	Round Plastic Tube Inserts.....	17
Rectangular.....	13	Shaped Bars.....	31
Round.....	13	Slotted Handrail.....	26
Square.....	13	Solid Bars.....	12-13
Feather Edge Bars.....	25	Square Bars.....	13
Flat Bars.....	12	Square Cold Formed Hollow Sections (SHS).....	14
Flooring & Stair Treads.....	384	Square Stainless Steel Tubes.....	538
Galvanised Steel Sheets.....	15	Square Plastic Tube Inserts.....	17
Galvanised Steel Tube.....	15	Stainless Steel Sheet.....	15
GRP Profiles.....	402-403	Steel Sheets.....	15
Equal Angles.....	402	Steel Plates.....	15
Flat Bars.....	402	T Sections.....	11
Hollow Box Sections.....	403	Unequal Angles.....	11
U Channels.....	402	Universal Beams & Columns.....	10
Unequal Angles.....	402	Wire.....	16
Universal I Beams.....	402	Black Annealed Steel Tying Wire.....	16
Half Round Square Edge.....	26	Copper Coated Mild Drawn Steel Wire.....	16
Hammered Hollow Sections.....	20	Galvanised Steel Line Wire.....	16
Handrail Covers.....	26	Galvanised Steel Wire.....	16
Handrail Sections.....	23-26	Green PVC Coated Galvanised Line Wire.....	16
Holed Bars.....	32-33	Rod & Coils.....	16
Hollow Sections.....	14-15	Stainless Steel Strand Wire.....	16
Galvanised Tube.....	15	Strand Wire.....	16
Rectangular.....	14	Tying Wire.....	16
Round PPC Black RAL 9005 Tube.....	15		
Round PPC Yellow RAL 1012 Tube.....	15		
Round.....	14		
Square.....	14		
Hot Rolled Plate.....	15		
Kick Plates.....	424-425		
Parallel Flanged Channels (PFC).....	10		
Plastic Handrail Covers.....	26		
Plastic Tube Inserts.....	17		
Rectangular.....	17		
Round.....	17		
Square.....	17		

Steel
website section



Universal Columns & Beams



Steel

Universal Columns



Size mm	kg/m		Length m	Code
152 x 152	23.00	6.8	per/m	301215215223
152 x 152	30.00	9.4	per/m	301215215230
152 x 152	37.00	11.5	per/m	301215215237
203 x 203	46.00	11.0	per/m	301220320346
203 x 203	52.00	12.5	per/m	301220320352
203 x 203	60.00	14.2	per/m	301220320360
203 x 203	71.00	17.3	per/m	301220320371
203 x 203	86.00	20.5	per/m	301220320386
254 x 254	73.00	14.2	per/m	301225425473

Universal Beams



Size mm	kg/m		Length m	Code
127 x 76	13.00	7.6	per/m	30111277613
152 x 89	16.00	7.7	per/m	30111528916
178 x 102	19.00	7.9	per/m	301117810219
203 x 102	23.00	9.3	per/m	301120310223
203 x 133	25.00	7.8	per/m	301120313325
203 x 133	30.00	9.6	per/m	301120313330
254 x 102	22.00	6.8	per/m	301125410222
254 x 102	25.00	8.4	per/m	301125410225
254 x 102	28.00	10.0	per/m	301125410228
254 x 146	31.00	8.6	per/m	301125414631
254 x 146	37.00	10.9	per/m	301125414637
254 x 146	43.00	12.7	per/m	301125414643

Universal Columns

Red Oxide Painted & Shot Blasted



Size mm	kg/m		Length m	Code
152 x 152	23.00	6.8	per/m	301215215223RO
152 x 152	30.00	9.4	per/m	301215215230RO
152 x 152	37.00	11.5	per/m	301215215237RO
203 x 203	46.00	11.0	per/m	301220320346RO
203 X 203	52.00	12.5	per/m	301220320352RO

Universal Beams

Red Oxide Painted & Shot Blasted



Size mm	kg/m		Length m	Code
127 x 76	13.00	7.6	per/m	30111277613RO
152 x 89	16.00	7.7	per/m	30111528916RO
178 x 102	19.00	7.9	per/m	301117810219RO
203 x 102	23.00	9.3	per/m	301120310223RO
203 x 133	25.00	7.8	per/m	301120313325RO
203 x 133	30.00	9.6	per/m	301120313330RO
254 x 146	31.00	8.6	per/m	301125414631RO
254 x 146	37.00	10.5	per/m	301125414637RO

Our range of GRP columns & channels can be found on page 402.

Rolled Steel Channel

Channel

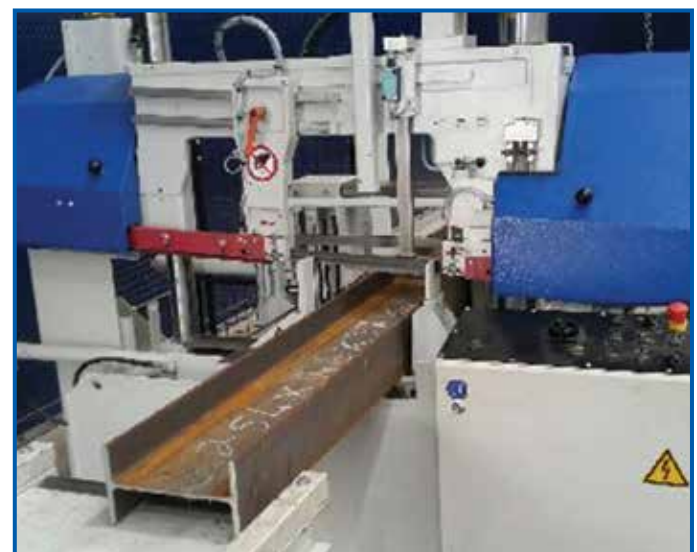


Tapered Flange

Size mm	kg/m	Length m	Code
40 x 20	2.87	6.1	30074020287
51 x 25	4.56	6.1	30075125456
51 x 38	5.80	6.1	3007513858
76 x 38	6.70	6.1	3007763867

Parallel Flange

Size mm	kg/m	Length m	Code
100 x 50	10.00	6.1	30071005010
125 x 65	15.00	6.1	300712764149
150 x 75	18.00	6.1	300715276178
150 x 90	24.00	per/m	30071509024
180 x 75	20.00	per/m	30071807520
180 x 90	26.00	per/m	30071809026
200 x 75	23.00	per/m	30072007523
200 x 90	30.00	per/m	30072009030
230 x 90	32.00	per/m	30072309032



Structural steel cutting service available on request.

Equal Angles



Size mm	kg/m	Length m	Code
13 x 13 x 3	0.82	6.1	300413133
20 x 20 x 3	0.88	6.1	300420203
25 x 25 x 3	1.11	6.1	300425253
25 x 25 x 5	1.77	6.1	300425255
30 x 30 x 3	1.36	6.1	300430303
30 x 30 x 5	2.18	6.1	300430305
40 x 40 x 3	1.83	6.0	300440403
40 x 40 x 4	2.60	6.1	300440404
40 x 40 x 5	3.09	6.1	300440405
40 x 40 x 6	3.52	6.1	300440406
50 x 50 x 3	2.33	6.0	300450503
50 x 50 x 5	3.97	6.0	300450505
50 x 50 x 6	4.47	6.0	300450506
50 x 50 x 8	5.82	6.1	300450508
60 x 60 x 6	5.42	6.1	300460606
60 x 60 x 8	7.12	6.1	300460608
70 x 70 x 6	6.83	6.1	300470706
70 x 70 x 8	8.36	6.1	300470708
75 x 75 x 6	6.87	6.1	300475756
75 x 75 x 8	9.00	6.1	300475758
75 x 75 x 10	11.10	6.1	3004757510
80 x 80 x 6	7.34	6.1	300480806
80 x 80 x 8	9.63	6.1	300480808
80 x 80 x 10	11.90	6.1	3004808010
90 x 90 x 6	8.30	6.1	300490906
90 x 90 x 8	10.90	6.1	300490908
100 x 100 x 8	12.22	6.1	30041001008
100 x 100 x 10	15.00	6.1	300410010010
120 x 120 x 10	18.20	6.1	300412012010
150 x 150 x 10	23.00	per/m	300415015010

Unequal Angles



Size mm	kg/m	Length m	Code
40 x 25 x 4	1.91	6.1	300440254
50 x 40 x 5	3.37	6.1	300450405
60 x 30 x 5	3.44	6.1	300460305
75 x 50 x 6	5.65	6.1	300475506
75 x 50 x 8	7.39	6.1	300475508
80 x 60 x 6	6.37	6.1	300480606
100 x 50 x 6	7.01	6.1	3004100506
100 x 65 x 7	8.77	6.1	3004100657
100 x 75 x 8	10.60	6.1	3004100758
125 x 75 x 8	12.20	6.1	3004125758
150 x 75 x 10	17.00	6.1	30041507510
150 x 90 x 10	18.20	6.1	30041509010

For GRP angles see page 402.

T Sections



Size mm	kg/m	Length m	Code
30 x 30 x 4	10.56	6.0	300930304
40 x 40 x 5	17.64	6.0	300940405
50 x 50 x 6	26.58	6.0	300950506



For red oxide paint see page 207.

Convex square edge bar page 22.



Reinforcing Bar

Rebar



Size mm	kg/m	Length mm	Code
10	0.61	6.0	302110
12	0.88	6.0	302112
16	1.55	6.0	302116
20	2.43	6.0	302120

Feather edge bar page 25.



Mild Steel Flat Bar



Size mm	kg/m	Length m	Code
10 x 3	0.24	4.1	30031034
12 x 6	0.57	3.0	0500030042
13 x 3	0.31	4.1	3003133
13 x 5	0.51	4.1	3003135
13 x 6	0.61	4.1	3003136
14 x 3	0.32	3.0	30031433
14 x 7	0.77	3.0	0500030060
16 x 3	0.38	4.1	300316341
16 x 5	0.63	4.1	3003165
16 x 8	1.00	3.0	0500030043
20 x 3	0.47	3.0	30032033
20 x 3	0.47	6.1	3003203
20 x 5	0.79	6.1	3003205
20 x 6	0.94	6.1	3003206
20 x 8	1.26	6.1	3003208
20 x 10	1.57	6.1	30032010
25 x 3	0.59	4.1	3003253
25 x 3	0.59	6.1	300325361
25 x 5	0.93	3.0	30032553
25 x 5	0.93	6.1	3003255
25 x 6	1.18	3.0	30032563
25 x 6	1.18	6.1	3003256
25 x 8	1.57	3.0	30032583
25 x 8	1.57	6.1	3003258
25 x 10	1.96	3.0	300325103
25 x 10	1.96	6.1	30032510
25 x 12	2.36	6.1	30032512
30 x 3	0.71	6.1	3003303
30 x 5	1.18	6.1	3003305
30 x 6	1.41	6.1	3003306
30 x 8	1.88	3.0	30033083
30 x 8	1.88	6.1	3003308
30 x 10	2.36	3.0	300330103
30 x 10	2.36	6.1	30033010
30 x 12	2.83	6.1	30033012
40 x 3	0.94	6.1	3003403
40 x 5	1.57	6.1	3003405
40 x 6	1.88	6.1	3003406
40 x 8	2.51	3.0	30034083
40 x 8	2.51	6.1	3003408
40 x 10	3.14	3.0	300340103
40 x 10	3.14	6.1	30034010
40 x 12	3.77	6.1	30034012

Size mm	kg/m	Length m	Code
40 x 15	4.71	6.1	30034015
40 x 20	6.28	6.1	30034020
50 x 3	1.18	6.1	3003503
50 x 5	1.96	6.1	3003505
50 x 6	2.36	6.1	3003506
50 x 8	3.14	3.0	30035083
50 x 8	3.14	6.1	3003508
50 x 10	3.93	3.0	300350103
50 x 10	3.93	6.1	30035010
50 x 12	4.71	6.1	30035012
50 x 15	5.89	6.1	30035015
50 x 20	7.85	6.1	30035020
50 x 25	9.81	6.1	30035025
60 x 3	1.41	4.1	3003603
60 x 6	2.83	6.1	3003606
60 x 8	3.77	6.1	3003608
60 x 10	4.71	6.1	30036010
60 x 12	5.65	6.1	30036012
60 x 15	7.07	6.1	30036015
65 x 10	5.23	6.1	30036510
65 x 12	6.11	6.1	30036512
70 x 3	1.62	4.1	3003703
70 x 6	3.30	6.1	3003706
70 x 8	4.40	6.1	3003708
70 x 10	5.50	6.1	30037010
75 x 5	3.06	6.1	3003755
75 x 6	3.72	6.1	3003756
75 x 10	6.06	6.1	30037510
75 x 12	7.24	6.1	30037512
80 x 3	1.89	4.1	3003803
80 x 6	3.90	6.1	3003806
80 x 8	5.24	6.1	3003808
80 x 10	6.28	6.1	30038010
80 x 12	7.54	6.1	30038012
80 x 15	9.83	6.1	30038015
90 x 6	4.24	6.1	3003906
90 x 8	5.65	6.1	3003908
90 x 10	7.07	6.1	30039010
100 x 3	2.36	4.0	30031003
100 x 5	3.93	6.1	30031005
100 x 6	4.71	6.1	30031006
100 x 8	6.28	6.1	30031008
100 x 10	7.85	6.1	300310010

Size mm	kg/m	Length m	Code
100 x 12	9.42	6.1	300310012
100 x 15	11.80	6.1	300310015
100 x 20	15.70	6.1	300310020
100 x 25	19.64	6.1	300310025
120 x 6	5.65	6.1	30031206
120 x 10	9.42	6.1	300312010
120 x 12	11.30	6.1	300312012
130 x 3	3.16	3.0	30031303
130 x 6	6.12	6.1	30031306
130 x 10	10.20	6.1	300313010
150 x 3	3.54	4.1	3003150341
150 x 6	7.60	6.1	30031506
150 x 8	9.42	6.1	30031508
150 x 10	11.80	6.1	300315010
150 x 12	14.10	6.1	300315012
150 x 15	17.66	6.1	300315015
150 x 20	23.60	6.1	300315020
180 x 6	8.48	6.1	30031806
180 x 10	14.13	6.1	300318010
180 x 12	16.96	6.1	300318012
200 x 6	9.42	6.1	30032006
200 x 8	12.56	6.1	30032008
200 x 10	15.70	6.1	300320010
200 x 12	18.80	6.1	300320012
200 x 15	23.55	6.1	300320015
200 x 20	31.40	6.1	300320020
220 x 10	17.27	6.1	300322010
250 x 6	11.78	6.1	30032506
250 x 8	15.70	6.1	30032508
250 x 10	19.60	6.1	300325010
250 x 12	23.60	6.1	300325012
250 x 15	29.44	6.1	300325015
250 x 20	39.25	6.1	300325020
275 x 10	21.59	6.1	300327510
300 x 6	14.20	6.1	30033006
300 x 8	18.84	6.1	30033008
300 x 10	23.60	6.1	300330010
300 x 12	28.30	6.1	300330012
300 x 15	35.52	6.1	300330015
300 x 20	47.10	6.1	300330020
300 x 25	58.88	6.1	300330025
350 x 10	27.48	6.1	300335010

For GRP flat bar see page 402.

Decorative bars page 21.



Convex bar page 22.



Handrail sections page 23.



Mild Steel Square Bar



Size mm	kg/m	Length m	Code
6	0.28	3.0	3001663
8	0.50	3.0	3001883
8	0.50	6.1	300188
10	0.73	1.0	300110101
10	0.73	3.0	300110103
10	0.73	6.1	30011010
12	1.15	1.0	300112121
12	1.15	3.0	300112123
12	1.15	6.1	30011212
14	1.62	3.0	300114143
14	1.62	6.1	30011414
16	2.04	3.0	300116163
16	2.04	6.1	30011616
20	3.14	3.0	300120203
20	3.14	6.1	30012020
25	4.97	3.0	0500030028
25	4.97	6.1	30012525
30	7.11	3.0	0500030029
30	7.11	6.1	30013030
40	12.61	6.1	30014040

Mild Steel Round Bar



Size mm	kg/m	Length m	Code
6	0.23	6.1	30026
8	0.39	3.0	300283
8	0.39	6.1	30028
10	0.64	1.0	3002101
10	0.64	3.0	3002103
10	0.64	6.1	300210
12	0.92	1.0	3002121
12	0.92	3.0	3002123
12	0.92	6.1	300212
14	1.26	3.0	3002143
14	1.26	6.1	300214
16	1.61	1.0	3002161
16	1.61	3.0	3002163
16	1.61	6.1	300216
20	2.47	3.0	3002203
20	2.47	6.1	300220
22	2.53	6.1	300222
25	3.94	6.1	300225
30	5.69	6.1	300230
40	10.10	6.1	300240

Bright Round Bar



Size mm	kg/m	Length m	Code
4	0.15	3	3032004
5	0.16	3	3032005
6	0.22	3	3032006
8	0.43	3	3032008
10	0.67	3	3032010
12	1.83	3	3032012
16	2.53	3	3032016
20	3.23	3	3032020
25	4.40	3	3032025

Ask our sales team about our range of metric & imperial bright round bars.

Steel section cutting service available at your local branch.

ERW Hollow Sections

ERW Square Tube



Size mm	kg/m	Length m	Code
12 x 12 x 1.5	0.53	6.0	3008121216
16 x 16 x 1.5	0.74	6.0	3008161616
20 x 20 x 1.5	0.96	6.0	3008202016
25 x 25 x 1.5	1.26	6.0	3008252516
30 x 30 x 1.5	1.52	6.0	3008303016
40 x 40 x 1.5	1.75	6.0	3008404015
50 x 50 x 1.5	2.41	6.0	3008505015
50 x 50 x 2.0	2.93	6.0	300850502

ERW Rectangular Tube



Size mm	kg/m	Length m	Code
30 x 15 x 1.4	0.94	3.0	0500030378
30 x 20 x 2.0	1.17	3.0	0500030361
40 x 20 x 1.5	1.37	6.0	3008402015
40 x 20 x 2.0	1.68	3.0	0500030362
50 x 25 x 1.5	1.90	6.0	3008502516
50 x 25 x 2.0	2.83	3.0	3005502523
50 x 25 x 2.0	2.83	6.0	3008502520

Enquire for imperial sizes.

ERW Round Tube



Size mm	kg/m	Length m	Code
12.0 x 1.2	0.35	1.0	300912121
12.0 x 1.2	0.35	3.0	300912123
16.0 x 1.5	0.57	1.0	300916151
16.0 x 1.5	0.57	3.0	300916153
16.0 x 1.5	0.57	6.0	30091616
16.0 x 2.0	0.71	3.0	0500030383
16.0 x 2.0	0.71	6.0	3009162
20.0 x 1.5	0.75	6.0	30092016
20.0 x 2.0	0.85	1.0	300920201
20.0 x 2.0	0.85	3.0	300920203
25.0 x 1.5	0.96	6.0	30092516
30.0 x 1.5	1.38	6.0	30093016
38.0 x 1.5	1.38	6.0	30093816

Enquire for imperial sizes.

For plastic inserts see page 17.



For steel, stainless steel & galvanised plates & sheets see page 15.

Hollow Sections



Steel

Square Hollow Section



Size mm	kg/m	Length m	Code
12 x 12 x 1.2	0.41	3.0	0500030371
16 x 16 x 1.3	0.64	3.0	0500030372
20 x 20 x 1.7	1.00	3.0	0500030351
20 x 20 x 2.0	1.12	3.0	3005202023
20 x 20 x 2.0	1.12	7.6	300520202
20 x 20 x 2.5	1.35	7.6	3005202025
25 x 25 x 2.0	1.43	3.0	3005252523
25 x 25 x 2.0	1.43	7.6	300525252
25 x 25 x 2.5	1.74	7.6	3005252525
25 x 25 x 3.0	2.15	7.6	300525253
30 x 30 x 2.0	1.75	3.0	3005303023
30 x 30 x 2.5	2.14	7.5	3005303025
30 x 30 x 3.0	2.65	7.6	300530303
40 x 40 x 2.0	2.38	3.0	3005404023
40 x 40 x 2.5	2.92	7.6	3005404025
40 x 40 x 3.0	3.66	7.5	300540403
40 x 40 x 4.0	4.46	7.6	300540404
50 x 50 x 2.5	3.71	7.6	3005505025
50 x 50 x 3.0	4.66	3.0	3005505033
50 x 50 x 3.0	4.66	7.5	300550503
50 x 50 x 4.0	5.72	7.6	300550504
50 x 50 x 5.0	7.16	7.6	300550505
60 x 60 x 3.0	5.67	3.0	3005606033
60 x 60 x 3.0	5.67	7.6	300560603
60 x 60 x 4.0	6.97	7.6	300560604
60 x 60 x 5.0	8.54	7.6	300560605
70 x 70 x 3.0	6.28	3.0	3005707033
70 x 70 x 3.0	6.28	7.6	300570703
70 x 70 x 5.0	10.10	7.6	300570705
80 x 80 x 2.5	7.25	3.0	30058080253
80 x 80 x 3.0	7.32	7.5	300580803
80 x 80 x 5.0	11.70	7.6	300580805
80 x 80 x 6.0	14.34	7.6	300580806
90 x 90 x 3.5	9.72	7.6	3005909036
90 x 90 x 5.0	13.30	7.6	300590905
90 x 90 x 6.0	16.40	7.6	3005909063
100 x 100 x 3.0	9.21	7.6	30051001003
100 x 100 x 4.0	12.00	3.0	300510010043
100 x 100 x 4.0	12.00	7.5	30051001004
100 x 100 x 5.0	14.80	7.6	30051001005
100 x 100 x 6.0	18.40	7.5	30051001006
100 x 100 x 8.0	22.90	per/m	30051001008
120 x 120 x 5.0	18.00	3.0	300512012053
120 x 120 x 5.0	18.00	7.6	30051201205
120 x 120 x 6.0	22.30	7.6	30051201206
150 x 150 x 5.0	22.70	3.0	300515015053
150 x 150 x 5.0	22.70	7.6	30051501505
150 x 150 x 6.0	22.70	7.6	30051501506
200 x 200 x 6.0	38.20	per/m	30052002006

Rectangular Hollow Section



Size mm	kg/m	Length m	Code
50 x 25 x 2.0	2.21	7.6	300550252
50 x 25 x 2.5	2.72	7.6	3005502525
50 x 25 x 3.0	3.41	7.6	300550253
50 x 30 x 2.5	2.92	7.6	3005503025
50 x 30 x 3.0	3.66	7.6	300550303
60 x 30 x 3.0	4.00	7.6	300560303
60 x 40 x 3.0	4.66	7.6	300560403
60 x 40 x 4.0	5.72	7.6	300560404
75 x 50 x 3.0	5.95	7.6	300575503
80 x 40 x 3.0	5.67	7.6	300580403
80 x 40 x 4.0	6.97	7.5	300580404
90 x 50 x 3.6	7.46	7.6	300590503
100 x 50 x 3.0	7.18	7.5	3005100503
100 x 50 x 4.0	8.86	7.6	3005100504
100 x 50 x 5.0	10.90	7.6	3005100505
100 x 60 x 3.5	8.59	7.6	30051006036
120 x 60 x 3.5	9.72	7.6	30051206036
120 x 60 x 5.0	13.30	7.6	3005120605
120 x 80 x 5.0	14.80	7.6	3005120805
150 x 100 x 5.0	18.70	7.6	30051501005
160 x 80 x 5.0	18.00	7.6	3005160805
200 x 100 x 5.0	22.70	per/m	30052001005
200 x 100 x 6.0	26.95	7.6	30052001006

Circular Hollow Section



Size mm	kg/m	Length m	Code
20.0 x 2.0	0.91	3.0	0500030384
21.3 x 3.0	1.43	7.6	30062133
26.9 x 2.5	1.50	7.5	300626926
26.9 x 3.0	1.87	7.6	30062693
33.7 x 3.0	2.41	7.5	30063373
42.4 x 2.5	2.55	7.5	300642425
42.4 x 3.0	3.09	7.5	300642432
48.3 x 3.0	3.63	7.5	300648332
60.3 x 3.0	4.51	7.6	300660332
76.1 x 3.0	5.75	7.6	300676132
88.9 x 3.0	6.76	7.5	300688932
88.9 x 5.0	10.30	7.5	30068895
114.3 x 3.0	10.11	7.6	30061143
114.3 x 3.5	10.12	7.6	3006114336
114.3 x 5.0	13.50	7.5	300611435
168.3 x 5.0	20.50	7.5	300616835



For plastic inserts see page 17.

Galvanised Steel Tube



Size mm	kg/m	Length m	Code
21.7 x 2.60	1.2	6.500	160215
26.9 x 2.65	1.8	3.000	16022530
26.9 x 2.65	1.8	6.500	160225
33.7 x 2.40	1.0	6.500	160234L
33.7 x 3.25	2.5	1.075	1602341075
33.7 x 3.25	2.5	2.000	16023420
33.7 x 3.25	2.5	3.000	16023430
33.7 x 3.25	2.5	6.500	160234
42.4 x 3.25	3.0	1.050	1602421050
42.4 x 3.25	3.0	1.075	1602421075
42.4 x 3.25	3.0	1.150	1602421150
42.4 x 3.25	3.0	1.450	1602421450
42.4 x 3.25	3.0	2.000	16024220

For aluminium tube see page 426.

PPC Yellow RAL 1018



Size mm	kg/m	Length m	Code
42.4 x 3.25	3.0	3.000	16024230
42.4 x 2.40	2.5	6.500	160242L
42.4 x 3.25	3.0	6.500	160242
48.3 x 3.25	3.5	1.044	1602481044
48.3 x 3.25	3.5	1.075	1602481075
48.3 x 3.25	3.5	1.150	1602481150
48.3 x 3.25	3.5	1.450	1602481450
48.3 x 3.25	3.5	2.000	16024820
48.3 x 3.25	3.5	3.000	16024830
48.3 x 2.40	3.0	6.000	160248L
48.3 x 3.25	3.5	6.500	160248
60.3 x 3.65	5.5	6.500	160260
76.1 x 3.60	6.5	6.500	160276

Special lengths can be cut to order on request.

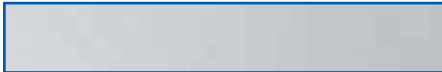
PPC Black RAL 9005



Size mm	kg/m	Length m	Code
42.4 x 3.25	3.0	1.050	1602421050B
42.4 x 3.25	3.0	6.500	160242B
48.3 x 3.25	3.5	1.044	1602481044B
48.3 x 3.25	3.5	6.500	160248B

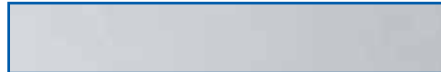
Plates & Sheets

Steel Hot Rolled Plate



Size mm	kg/m ²	Code
2000 x 1000 x 1.6	12.5	30196316
2500 x 1250 x 1.6	12.5	30198416
2500 x 1250 x 2.0	16.0	3019842
2000 x 1000 x 3.0	23.5	3010633
2500 x 1250 x 3.0	23.5	3010843
3000 x 1500 x 3.0	23.5	30103153
2000 x 1000 x 4.0	31.5	3010634
2500 x 1250 x 4.0	31.5	3010844
3000 x 1500 x 4.0	31.5	30103154
2000 x 1000 x 5.0	39.0	3010635
2500 x 1250 x 5.0	39.0	3010845
2000 x 1000 x 6.0	47.0	3010636
2500 x 1250 x 6.0	47.0	3010846
2000 x 1000 x 8.0	63.0	3010638
2500 x 1250 x 8.0	63.0	3010848
2000 x 1000 x 10	78.5	30106310
2500 x 1250 x 10	78.5	30108410
2000 x 1000 x 12	98.0	30106312
2500 x 1250 x 12	98.0	30108412
2000 x 1000 x 15	118.0	30106315
2500 x 1250 x 15	118.0	30108415
2000 x 1000 x 20	157.0	30106320
2500 x 1250 x 20	157.0	30108420

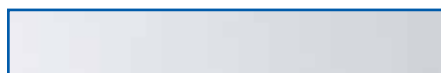
Steel CR4 Sheet



Size mm	kg/m ²	Code
2000 x 1000 x 0.8	6.0	30186308
2500 x 1250 x 0.8	6.0	30188408
2000 x 1000 x 1.0	8.0	30186310
2500 x 1250 x 1.0	8.0	30188410
2000 x 1000 x 1.2	9.5	30186312
2500 x 1250 x 1.2	9.5	30188412
2000 x 1000 x 1.5	12.5	30186316
2500 x 1250 x 1.5	12.5	30188416
2000 x 1000 x 2.0	16.5	30186320
2500 x 1250 x 2.0	16.5	30188420
2000 x 1000 x 2.5	19.5	30186325
2500 x 1250 x 2.5	19.5	30188425
2000 x 1000 x 3.0	23.5	30186330
2500 x 1250 x 3.0	23.5	30188430

Stainless Steel Sheet

Grade 304 2B Mill Finish



Size mm	kg/m ²	Code
2500 x 1250 x 0.9	6.0	30348409B
2500 x 1250 x 1.2	9.5	30348412B
2000 x 1250 x 1.5	15.0	30348415B
2500 x 1250 x 2.0	16.0	30348420B
2000 x 1250 x 3.0	39.0	30348430B

Galvanised Steel Sheet



Size mm	kg/m ²	Code
2000 x 1000 x 0.8	6.5	30176308
2500 x 1250 x 0.8	6.5	30178408
2000 x 1000 x 1.0	8.0	30176310
2500 x 1250 x 1.0	8.0	30178410
2000 x 1000 x 1.2	10.0	30176312
2500 x 1250 x 1.2	10.0	30178412
2000 x 1000 x 1.5	11.0	30176316
2500 x 1250 x 1.5	11.0	30178415
2000 x 1000 x 2.0	11.0	30176320
2500 x 1250 x 2.0	17.0	30178420
3000 x 1250 x 2.0	17.0	301712420
2500 x 1250 x 2.5	20.5	30178425
2500 x 1250 x 3.0	24.5	30178430
3000 x 1250 x 3.0	24.5	301712430
3000 x 1500 x 3.0	24.5	301712530

Grade 304 240G Dull Polish



Size mm	kg/m ²	Code
2500 x 1250 x 0.9	6.0	30348409
2500 x 1250 x 1.2	9.5	30348412
2000 x 1250 x 1.5	15.0	30348415
2500 x 1250 x 2.0	16.0	30348420
2000 x 1250 x 3.0	39.0	30348430



Galvanised Steel Wire - Coils

Ø mm	m/per kg	½kg Coil Code	5kg Coil Code	25kg Coil Code
0.90	200	040203090	-	-
1.25	103	-	-	040201125
1.60	63	040203160	040202160	040201160
2.00	40	040203200	040202200	040201200
2.50	25	-	-	040201264
3.15	16	-	040202315	040201315
4.00	10	-	-	040201400
5.00	8	-	-	040201500

Galvanised Steel Line Wire

Ø mm	m/per kg	50m Code	75m Code	100m Code
3.00	18	04L30050	04L30075	04L300100

High Tensile Galvanised Steel Wire - Coils

Ø mm	m/per kg	25kg Coil Code
2.50	25	04H25025
3.15	16	04H31525



Green PVC/Galvanised Steel Core Line Wire

Ø mm	m/per kg	25kg Coil Code
4.0/3.0	15	042825400300G



Black Annealed Steel Tying Wire - Coils

Ø mm	m/per kg	20kg Coil Code	25kg Coil Code
1.00	162.3	-	041401100
1.25	104.4	-	041401125
1.60	63.4	041401160B	041401160
2.00	40.5	-	041401200
3.15	16.4	041401315B	041401315



Stainless Steel Grade 316 Strand Wire Coils

Ø mm	Description	m/per kg	10m Code	50m Code	100m Code
3	7 x 7 Strand Wire	27	180660510	180660550	1806605100
6	1 x 19 Strand Wire	6	180666510	180666550	1806665100



Copper Coated Mild Drawn Steel Wire - Coils and Straight Lengths

Ø mm	m/per kg	25kg Coil Code	6' (1.8m)* Code	8' (2.4m)* Code
1.60	63.4	-	04090116006	-
2.00	40.5	040901200	04090120006	-
2.36	29.2	-	04090123606	-
2.65	23.1	-	-	04090126508
2.95	18.6	04090129506	-	-
3.15	16.4	040901315	04090131506	04090131508
3.65	12.2	040901365	04090136506	-
4.00	10.1	040901400	04090140006	04090140008
4.88	6.8	-	04090148806	04090148808



*See website for wire bundle quantities.

Ø 3 & 6mm strand wire fixings & turn buckles from page 527.

Square Ribbed



Size mm	Wall Thickness mm	Code
10 x 10	1.0 - 1.5	320110
15 x 15	1.0 - 2.0	320115
16 x 16	1.0 - 1.6	320116
20 x 20	1.5 - 2.5	3201202
25 x 25	1.0 - 1.5	320125
25 x 25	2.0 - 3.2	3201252
30 x 30	1.0 - 2.0	320130
30 x 30	1.5 - 3.2	3201302
32 x 32	1.0 - 1.6	320132
40 x 40	1.0 - 2.0	320140
40 x 40	2.6 - 4.0	3201402
45 x 45	1.5 - 2.0	320145
50 x 50	1.0 - 1.5	320150
50 x 50	2.0 - 3.2	3201502
50 x 50	3.0 - 5.0	3201503
60 x 60	1.5 - 2.5	320160
60 x 60	3.0 - 4.0	3201602
70 x 70	2.0 - 4.0	320170
75 x 75	2.0 - 4.5	3201754
80 x 80	2.5 - 4.0	320180
80 x 80	3.6 - 5.0	3201802
90 x 90	2.0 - 5.0	320190
90 x 90	3.6 - 6.3	3201902
100 x 100	2.5 - 5.0	3201100
120 x 120	2.5 - 5.0	3201120

Rectangular Ribbed



Size mm	Wall Thickness mm	Code
25 x 12	1.5	32022512
38 x 19	1.2 - 2.0	32023819
40 x 20	1.2 - 2.0	32024020
50 x 25	1.0 - 1.5	32025025
50 x 25	2.0 - 3.0	320250252
50 x 30	1.5 - 3.2	320250302
60 x 30	1.5 - 3.2	32026030
60 x 40	1.6 - 3.2	32026040
60 x 40	2.5 - 3.5	320260402
75 x 12	1.5 - 2.0	32027525
80 x 40	1.5 - 3.0	32028040
100 x 50	2.0 - 4.0	320210050
120 x 60	2.0 - 3.0	320212060
120 x 80	5.0 - 8.0	320212080

Rounded Ribbed



Size mm	Wall Thickness mm	Code
16.0	1.0 - 1.5	320316
19.0	1.0 - 1.5	320319
22.0	1.0 - 2.0	320322
22.0	2.5 - 3.5	3203222
25.0	1.0 - 1.5	320325
26.9	2.0 - 3.0	16133A
32.0	1.0 - 1.5	320332
32.0	2.5 - 3.0	3203322
33.7	2.6 - 4.0	16133B
37.0	1.5 - 2.0	320337
42.4	2.6 - 4.0	16133C
48.3	3.2 - 5.0	16133D
50.0	1.0 - 1.5	320350
50.0	5.0	3203505
50.0	2.0 - 3.0	3203502
60.0	1.0 - 2.0	320360
60.0	3.0 - 5.0	3203602
60.3	3.2 - 5.0	16133E
76.0	3.0 - 4.0	320376

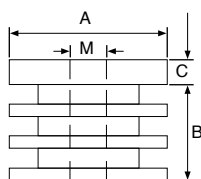
For our full range of hollow sections see page 14.



Adjustable Feet

Plastic Cap

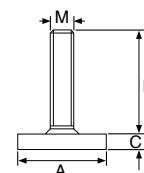
For use with adjustable foot



(A) ■ mm	(B) mm	(C) mm	(M) Ø mm	Code
25 x 25	19	5.5	10	320125T10
30 x 30	20	6.0	10	320130T10
40 x 40	23	6.0	10	320140T10
50 x 50	30	7.0	10	320150T10

Adjustable Foot

For use with plastic cap



(A) Ø mm	(B) mm	(C) mm	(M) Ø mm	Code
25	35	6.5	10	32T1025
28	35	6.5	10	32T1028
35	35	8.0	10	32T1035



Download a copy of our exclusive paint catalogue now.



We've got you covered!